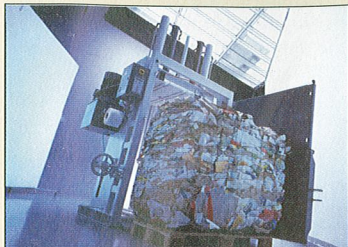


storage focus

Shredder Baler combinations



HSM UK specialise in providing machines to help dispose of both confidential and recyclable waste.

The Company's SP4040 and SP5080 models combine both a high capacity shredder and an automatic baling system to compact and tie the resulting shredded pieces, for convenience.

Both models incorporate a loading table and electric conveyer system to make operation simple and straightforward. Automatic reverse ensures that there are no jams and stoppages, whilst the bales of the shredded material are made automatically, with a display indicating when the bale is complete and ready for removal, using the trolley provided.

Both models are available in security levels two and three. However, the act of crushing, compacting and bailing the shredded particles further increases security. The machines can each produce up to nine bales per hour, ensuring that throughput is

swift and operator time is minimised.

The combination shredder baler systems are just part of a much wider range that provides shredding machines from desk side shredders, through to those suitable for department use and even larger system.

Further information from HSM.
Tel: 01543 272480 www.hsmuk.co.uk

Proven in the waste recycling business



Whether you require a long or short-term facility for the un-loading, storage, processing and recycling of waste material in a dry, wind free environment, Rubb Buildings have the answer. With a proven track record, their permanent and relocatable buildings have the flexibility to provide a tailor made solution.

Each Rubb building comprises of a galvanized steel frame with a high strength PVC coated polyester translucent membrane. Frame supported membrane

structures provide a degree of flexibility not found with traditional buildings. This was demonstrated in the construction of a standard BVE building for SITA. The 30m x 30m with 6 metre high sidewalls, was supplied as a temporary waste transfer station at North Shields, on the outskirts of Newcastle upon Tyne. Once construction of the permanent waste facility had been completed the Rubb building was disassembled and stored for future use.

This was easily achieved as the components of the building were easy to dismantle and economical to store.

The diversity in design can be seen in the variety of projects undertaken by Rubb. From the 30m x 30m BVE waste transfer station for Gateshead Council or the enclosed structures with multiple vehicle access such as the 30m x 30m BVR type building at Portsmouth for Veolia Environmental Services. Rubb supplied an 18m x 24m BVR type building to Bryson House Recycling, Northern Ireland in 2005 this proved so successful that a second building was required in 2006. Erected adjacent to the original building they were joined together via a 4m x 6m link tunnel.

The buildings can be easily lengthened, shortened or combined as needs change, those with vertical sidewalls and gable ends readily accept standard door and window treatments.

Further information from Rubb Buildings Ltd. Tel: (0191) 482 2211. Fax: (0191) 482 2516 www.rubb.com

Reduces installation costs



HIGH average local rainfall at Largs in North Ayrshire presented a challenge when building a 150-bay car park at a new community resource centre. But attenuation of significant surface runoff from the car park was achieved with significant cost savings by installing Hydro International's Stormbloc® modular storage system with the new Stormbloc® Inspect access chamber and a Hydro-Brake® Flow Control device.

North Ayrshire Council is building the centre to provide regional location for health care, social services and other community benefits. With an average annual rainfall of nearly 1000 mm, installing the car park for the new North West Ayrshire Resource Centre could have created significant runoff problems.

Local planning imposed a discharge limit of 5 litres / sec for the car park and the original plan was to achieve this with a modular storage cell solution sited under the car park. However, Joe Smith,

stronger, bigger and BETTER waste MANAGEMENT BUILDINGS

Whenever you need a long or short term facility for the storage and or recycling of waste material, RUBB Buildings have the answer. With a proven track record, our permanent and relocatable buildings have the flexibility to provide a tailor made solution to your requirements. RUBB Buildings provide structures that allow waste material to be un-loaded, stored and processed in a dry, wind free environment.

- Fabric Engineering
- Adaptability of Use
- Flexible Investment
- Creative Solutions
- Easy Extensions
- Low Cost Buildings
- Worldwide Cover
- Optimising Storage
- Speedy Construction
- Instant Shelters

RUBB Buildings Ltd

Dukesway, TVTE, Gateshead, NE11 0QE, England.
Tel: 0191 482 2211.
Fax: 0191 482 2516

E-mail - uk: info@rubb.co.uk
usa: info@rubbusa.com
norway: rubbno@online.no

www.rubb.com



UK - CERTIFICATE
No. 95/6243

stronger, bigger and
BETTER waste
MANAGEMENT BUILDINGS

Whenever you need a long or short term facility for the storage and or recycling of waste material, RUBB Buildings have the answer. With a proven track record, our permanent and relocatable buildings have the flexibility to provide a tailor made solution to your requirements. RUBB Buildings provide structures that allow waste material to be un-loaded, stored and processed in a dry, wind free environment.

- Fabric Engineering
- Adaptability of Use
- Flexible Investment
- Creative Solutions
- Easy Extensions
- Low Cost Buildings
- Worldwide Cover
- Optimising Storage
- Speedy Construction
- Instant Shelters

We Cover The World.®

RUBB
BUILDING SYSTEMS

AN INTERNATIONAL COMPANY